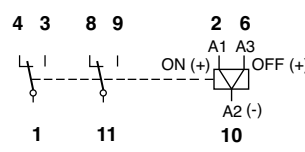


Type	C3-R2x/ ... V Remanence plug-in relays, 2 change-over contacts			
Maximum contact load	10 A/250 V AC-1	0,5 A/110 V DC-1		
	10 A/30 V DC-1	0,2 A/220 V DC-1		
Recommended minimum contact load	10 mA/10 V Code 0, 9			
	5 mA/5 V Code 8			



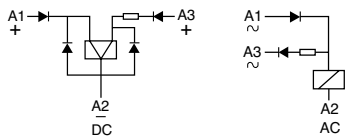
Contacts			
Material	Standard	Code 0	AgNi
	Optional	Code 8	AgNi + 5 μ Au
	Optional	Code 9	AgNi + 0,2 μ Au
Rated current	10 A		
Switch-on current max. (20 ms)	30 A		
Switching voltage max.	250 V		
AC load (Fig 1)	2,5 kVA		
DC load	see Fig. 2		

Connection diagram



Coil	
Coil resistance	see table; tolerance ± 10 %
ON pulse power	1,5 VA/W
OFF pulse power	0,5 VA/W
Pull-in ON/OFF	≤ 0,8 x U _N

Internal Diagram:



Coil table

VAC	mA ON	mA OFF	VDC	mA ON	mA OFF
24	75	12	12	125	41
48	38	6	24	63	21
115	16	2,5	48	31	10
230	8	1,3	110	14	4,5

Fig. 1 AC voltage endurance

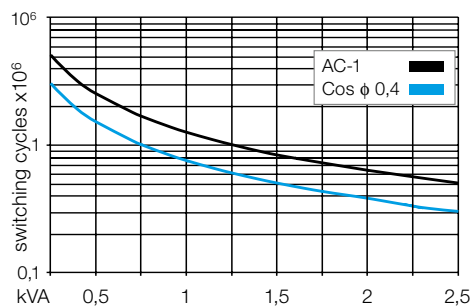
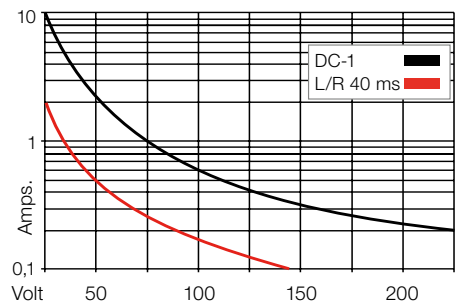


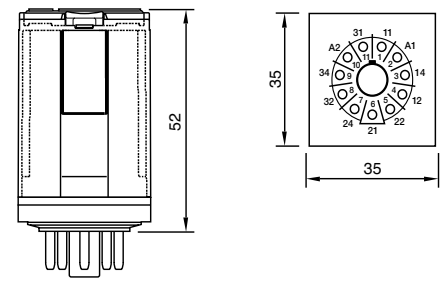
Fig. 2 DC load limit curve



Insulation	
Contact open	1000 V
Contact/contact	2,5 kV
Contact/coil	2,5 kV
Insulation resistance at 500 V	≥1 GΩ
Insulation, IEC 61810-1	2,5 kV/3

Specifications	
Ambient temperature operation/storage	-40 (no ice)...60 °C / -40 ... 80 °C
Minimum pulse length for ON/OFF	50 ms
Mechanical life ops	10 Mill.
DC voltage endurance at rated load	≥100000 switching cycles
Switching frequency at rated load	≤ 1200/ops/h
Protection class	IP40
Weight	81 g

Dimensions [mm]



Standard types			
VAC 50 Hz/60 Hz: 24, 48, 115, 230	C3-R20/AC ... V	C3-R28/AC ... V	C3-R29/AC ... V
VDC 12, 24, 48, 110	C3-R20/DC ... V	C3-R28/DC ... V	C3-R29/DC ... V

"..." Enter the voltage for full type designation

Accessories	
Socket:	S3-B, S3-S, S3-L, S3-P, S3-P0
Retaining clip, plastic:	S30-CM

Technical approvals, conformities

